

# KENWOOD

Listen to the Future

## NEXEDGE™

# NX-700(H)/800(H)

NEXEDGE™ VHF/UHF Digital & FM Mobile Radios

**NXDN®**

**FleetSync®**  
by KENWOOD

### ● GENERAL FEATURES

- 30W / 50W (136-174 MHz) Models
- 30W / 45W (400-470, 450-520 MHz) Models
- 512 CH-GID / 128 Zones
- Dash & Remote Mount
- 14 Character Alphanumeric Aliases
- Backlit Dot Matrix LCD
- 3-Digit Sub-Display
- Function/Status LCD Icons
- RSSI Indicator
- Date & 12/24 Hour Time Clock
- Transmit/Busy/Call Alert/Warn LED
- On/Off Power Control
- 4 Up/Down Selectors
- 6 Front PF Keys
- Emergency/AUX Key
- 4W Speaker Audio
- Emergency Call Features
- Lone Worker
- Multi-Language Display
- Programmable TX/RX Indication (On/Off)
- Special Alert Tone Patterns
- Time Out Timer
- Busy Channel Lockout
- DB-25 Accessory Connector
- 9 Programmable AUX I/Os
- 2 Programmable AUX Outputs
- Ignition Sense
- Public Address / Horn Alert Option
- MIL-Spec Standard Mic
- MIL-Spec 12-Key DTMF Mic Option
- KPG-111D Windows® FPU
- Flash Firmware Upgrading
- Front Panel Test & Tune
- Cloning
- MIL-STD-810 C/D/E/F
- MIL-STD "Driven-Rain"
- IP-54/55 Water & Dust Intrusion
- Easy Option Port
- PC Serial Interface
- SDM Manual Input<sup>1</sup>
- Transparent Data Mode<sup>1</sup>
- GPS Receiver Option
- VGS-1 Voice Guide / Voice & GPS Data Storage Option

### ● DIGITAL – COMMON

- NXDN® Digital Air Interface
- AMBE+2™ VOCODER
- 6.25 & 12.5 kHz Channels
- Over-the-Air Alias
- Paging Call
- Emergency Call
- All Group Call
- Status Messaging<sup>1</sup>
- Remote Stun/Kill<sup>1</sup>
- Remote Check<sup>1</sup>
- Short & Long Data Messages<sup>1</sup>
- GPS Location with Voice<sup>1</sup>
- NXDN® Scrambler Included (Conventional: per CH)

### ● DIGITAL CONVENTIONAL MODE

- 64 Radio Access Numbers (RAN)
- DTMF (Encode/Decode)
- Individual & Group Selective Call
- Mixed FM/Digital Operation

### ● DIGITAL TRUNKING MODE

- Individual Private Call
- Group Call
- Broadcast Call
- Transmission Trunked Mode<sup>2</sup>
- Message Trunked Mode<sup>2</sup>
- Call Queuing with Priority<sup>2</sup>
- Call Queue Pre-emption<sup>2</sup>
- Late Entry (UID & GID)<sup>2</sup>
- 4 Priority Monitor ID's<sup>2</sup>
- Remote Group Add<sup>1</sup>
- Failsoft Mode
- Multi-Site IP Network Compatible

### ● SCAN

- Single Zone / Multi-Zone / List Scan
- Dual Priority Scan (Conventional)

### ● FM MODES - GENERAL

- 25 & 12.5 kHz Channels
- FleetSync®/II
- DTMF Encode/Decode
- Companded Audio
- Voice Inversion Scrambler
- Encryption/ANI Board Control

### ● FM CONVENTIONAL ZONES

- QT / DQT
- Two-Tone Decode
- Single/Two-Tone Encode
- Call Key 1-6
- Operator Selectable Tone

### ● FM LTR® TRUNKED ZONES

- Kenwood LTR® Features

### ● FleetSync®/II (FM)

- PTT ID Digital ANI
- Selective Call & Group Call
- Status Messaging<sup>1</sup>
- Emergency Status
- Caller ID Display
- Short Text Messages<sup>1</sup>
- Power On/Off Status Messages<sup>1</sup>
- Input/Output Status Messages<sup>1</sup>
- Send/Display GPS<sup>1</sup>
- PTT ID & Emergency GPS Reporting<sup>1</sup>
- Status Message Block GPS Reporting<sup>1</sup>
- Ignition On/Off GPS Reporting<sup>1</sup>



## Options

**KMC-35**  
Microphone



**KMC-36**  
Microphone with Keypad



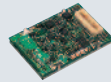
**KMC-9C**  
Control Station  
Desktop Microphone



**KES-5**  
External Speaker



**VGS-1**  
Voice Guide  
& Storage Unit



**KRK-10**  
Panel Remote Kit



**KPS-15**  
DC Power Supply



**KAP-2**  
Horn Alert  
/ PA Relay Unit



**KCT-23M**  
DC Cable (10 feet)



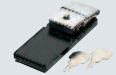
**KCT-23M3**  
DC Cable (23 feet)

KCT-23M3

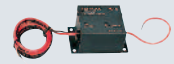
**KCT-46**  
Ignition Sense Cable



**KMB-10**  
Key Lock Adapter



**KLF-2**  
Line Noise Filter



## Main Specifications

All accessories and options may not be available in all markets. Contact an authorized Kenwood dealer for details and complete list of all accessories and options.

		NX-700(H) K	NX-800(H) K
<b>GENERAL</b>			
<b>Frequency Range</b>	Type 1 Type 2	136-174 MHz	450-520 MHz 400-470 MHz
<b>Number of Channels</b>		512	
<b>Zones</b>		128	
<b>Max. Channels per Zone</b>		250	
<b>Channel Spacing</b>	<b>Analog</b> <b>Digital</b>	12.5 / 15 / 25 / 30 kHz 6.25 / 12.5 kHz	12.5 / 25 kHz 6.25 / 12.5 kHz
<b>Operating Voltage</b>		13.6 V DC ± 15%	
<b>Operating Temperature Range</b>		-22° F to +140° F (-30° C to +60° C)	
<b>Frequency Stability</b>		± 1.0 ppm	
<b>Antenna Impedance</b>		50 Ω	
<b>Dimensions (W x H x D)</b>	Projections not included	6.30 x 1.77 x 6.18 in (160 x 45 x 157 mm)	
<b>Weight (net)</b>		3.04 lb (1.38 kg)	
<b>FCC ID</b>	<b>K</b> Type 1 <b>K</b> Type 2 <b>HK</b> Type 1 <b>HK</b> Type 2	K44378600 K44378700 K44378601	K44378700 K44378701 K44378702 K44378703
<b>IC Certification</b>	<b>K</b> Type 1 <b>K</b> Type 2 <b>HK</b> Type 1 <b>HK</b> Type 2	282F-378600 282F-378701 282F-378601	282F-378700 282F-378701 282F-378702 282F-378703

Analog measurements made per TIA/EIA 603 and specifications shown are typical. Kenwood reserves the right to change specifications without prior notice or obligation.

FleetSync® is a registered trademark of Kenwood Corporation.  
LTR® is a registered trademark of Transcript International.  
AMBE+2™ is a trademark of Digital Voice Systems Inc.  
Windows® is a registered trademark of Microsoft Corporation.  
NXDN® is a trademark of Kenwood Corporation and Icom Inc.  
NEXEDGE™ is a trademark of Kenwood Corporation.

		NX-700(H) K	NX-800(H) K
<b>RECEIVER</b>			
<b>Sensitivity</b>	<b>Digital @ 6.25 kHz (3% BER)</b> <b>Digital @ 12.5 kHz (3% BER)</b> <b>Analog (12 dB SINAD)</b>	0.20 μV 0.28 μV 0.25 μV	0.20 μV 0.28 μV 0.25 μV
<b>Selectivity</b>	<b>Analog @ 25 kHz</b> <b>Analog @ 12.5 kHz</b>	80 dB 70 dB	80 dB 70 dB
<b>Intermodulation</b>	<b>Analog</b>	75 dB (±50, 100 kHz)	
<b>Spurious Response</b>	<b>Analog</b>	90 dB	85 dB
<b>Audio Distortion</b>		Less than 3%	
<b>Audio Output</b>		4 W / 4 Ω	
<b>TRANSMITTER</b>			
<b>RF Power Output</b>	<b>Mid Power</b>	30 W to 1 W	30 W to 1 W 25 W to 1 W (490-520 MHz)
	<b>High Power</b>	50 W to 10 W	45 W to 10 W 40 W to 10 W (490-512 MHz) 35 W to 10 W (512-520 MHz)
<b>Spurious Response</b>		73 dB	75 dB
<b>FM Hum &amp; Noise</b>	<b>Analog @ 25 kHz</b> <b>Analog @ 12.5 kHz</b>	50 dB 45 dB	
<b>Audio Distortion</b>		Less than 3%	
<b>Modulation</b>		16K0F3E, 14K4F1D, 11K0F3E, 8K30F1E, 8K30F1D, 8K30F7W, 4K00F1E, 4K00F1D, 4K00F7W, 4K00F2D	

Footnotes from Front:

<sup>1</sup> Requires NX subscriber unit PC Serial Interface compatible software application (e.g. Kenwood AVL & Dispatch Messaging software) or hardware (e.g. console).

<sup>2</sup> These trunked features are primarily system programming and operational dependent. Priority Monitor also requires NX subscriber settings.

## Applicable MIL-STD & IP

MIL Standard	MIL 810C Methods/Procedures	MIL 810D Methods/Procedures	MIL 810E Methods/Procedures	MIL 810F Methods/Procedures
<b>Low Pressure</b>	500.1/Procedure I	500.2/Procedure I, II	500.3/Procedure I, II	500.4/Procedure I, II
<b>High Temperature</b>	501.1/Procedure I, II	501.2/Procedure I, II	501.3/Procedure I, II	501.4/Procedure I, II
<b>Low Temperature</b>	502.1/Procedure I	502.2/Procedure I, II	502.3/Procedure I, II	502.4/Procedure I, II
<b>Temperature Shock</b>	503.1/Procedure I	503.2/Procedure I	503.3/Procedure I	503.4/Procedure I, II
<b>Solar Radiation</b>	505.1/Procedure I	505.2/Procedure I	505.3/Procedure I	505.4/Procedure I
<b>Rain</b>	506.1/Procedure I, II	506.2/Procedure I, II	506.3/Procedure I, II	506.4/Procedure I, III
<b>Humidity</b>	507.1/Procedure I, II	507.2/Procedure II, III	507.3/Procedure II, III	507.4
<b>Salt Fog</b>	509.1/Procedure I	509.2/Procedure I	509.3/Procedure I	509.4
<b>Dust</b>	510.1/Procedure I	510.2/Procedure I	510.3/Procedure I	510.4/Procedure I, III
<b>Vibration</b>	514.2/Procedure VIII, X	514.3/Procedure I	514.4/Procedure I	514.5/Procedure I
<b>Shock</b>	516.2/Procedure I, II, III, V	516.3/Procedure I, IV, V	516.4/Procedure I, IV, V	516.5/Procedure I, IV, V
<b>International Protection Standard</b>				
<b>Dust &amp; Water Protection</b>	IP54: Radio itself IP54/55: Remote head with KRK-10			

## Listen to the Future

Kenwood has always connected with people through sound. Now we want to expand the world of sound in ways that only Kenwood can, listening to our customers and to the pulse of the coming age as we head toward a future of shared discovery, inspiration and enjoyment.

Kenwood U.S.A. Corporation  
Communications Sector Headquarters

3970 Johns Creek Court, Suite 100, Suwanee, GA 30024

Order Administration/Distribution

P.O. BOX 22745, 2201 East Dominguez St., Long Beach, CA 90801-5745

Kenwood Electronics Canada Inc.  
Canadian Headquarters and Distribution

6070 Kestrel Road, Mississauga, Ontario, Canada L5T 1S8

www.kenwoodusa.com



ISO9001 Registered  
Communications Equipment Division  
Kenwood Corporation  
ISO9001 certification